

Dry Wipers

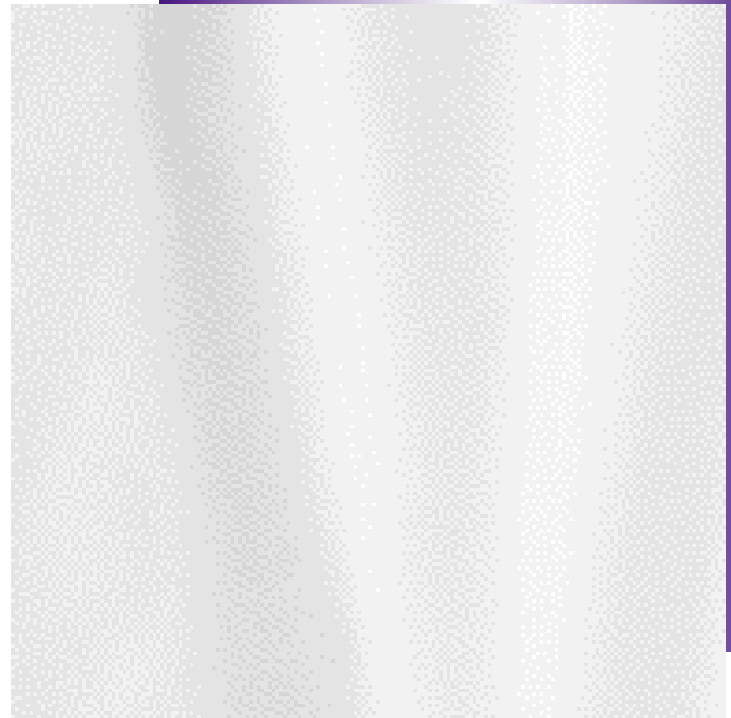
TECHNICAL DATA SHEET



50% Rayon/50% Polyester Spunlace Blend.
Suitable for ISO Class 5 or higher cleanrooms.

Product Qualities

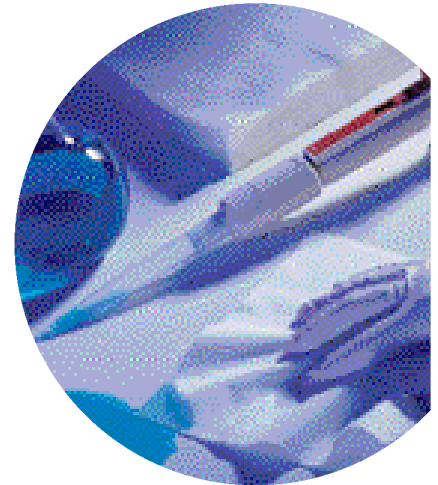
- Continuous filament Rayon/Polyester spunlace blend for a clothlike feel
- No binders or surfactants, resulting in low extractables
- High water absorbency rate, plus excellent absorption efficiency and capacity
- Double-bagged with case liner
- Certificate of Conformance available online at www.kimtech.com/certificates



Product Specifications

Characteristic	Specification Target
Particle Generation	
Biaxial Shake, particles \geq 0.5 microns	$15.1 \times 10^6/m^2$
Biaxial Shake, fibers \geq 100 microns	$263 \times 10^3/m^2$
Total Extractables	
Deionized Water, g/m ²	0.03
Isopropyl Alcohol (IPA, isopropanol), g/m ²	0.01
Ions	
Sodium (Na ⁺), ppm	11.1
Potassium (K ⁺), ppm	2.5
Chloride (Cl ⁻), ppm	10
Absorbency	
Absorbent Capacity, ml/m ²	395
Absorbency Rate, seconds	1.0

All tests performed in accordance with IEST RP-CC004.3.



Code	Cleanroom Class		Delivery System	Color	Material	Size W" x L"	Put-Up	Case Count
	ISO	FS209						
CL5 06179	5	100	Flat / Double Bag		Rayon/Polyester	9" x 9"	5/100	500
06173	5	100	Flat / Double Bag		Rayon/Polyester	12" x 12"	5/100	500

TECHNICAL HELPLINE

1•800•851•7538

E-MAIL: kimtech@kcc.com



© Registered Trademark or * Trademark of Kimberly-Clark Worldwide, Inc. © 2006 KCWW. All Rights Reserved.
The COLOR PURPLE is a Registered Trademark of KCWW.
I8328 KCPM-536